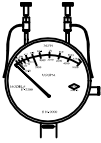


METER DATA



CONSTRUCTION: ALUMINUM BODY ASTM B211-03  
 OPERATION: DIAPHRAGM (BUNA CONVOLUTED)  
 ACCURACY: + 2% FULL SCALE  
 TEMPERATURE: 180°F / 80°C  
 PRESSURE: 500 PSIG - 3450 KPA  
 APPROX. WEIGHT: 3.75 LBS (1.7 KGS)

4" DIAL STANDARD - 6" DIAL AVAILABLE

CONSTRUCTION & SPECIFICATIONS

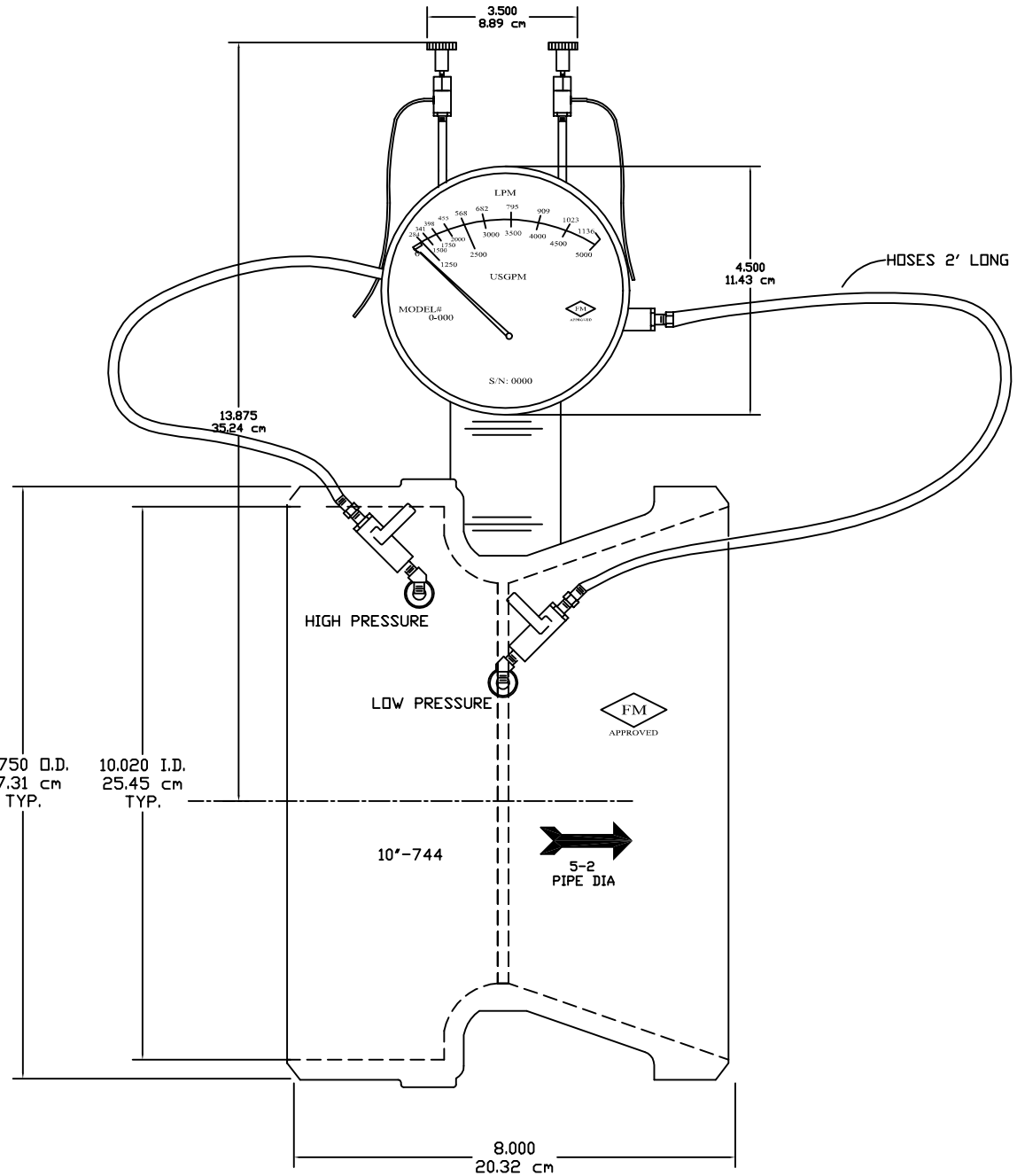
MATERIALS: MACHINED 1026 CARBON STEEL  
 ASTM A-106 - B/C HRS  
 or  
 ASTM A-216 Gr. WCB CAST STEEL

VALVES: 1/4" BRASS BALL  
 Rated @ 600 WOG  
 Body: ASTM-B584  
 Tail Piece: ASTM B16 C36600  
 Ball: ASTM B16 C36600  
 (HARD CHROME PLATED)

BRASS FITTING: ASTM B16 C36600  
 Meets functional requirements of the  
 SAE J530, SAE J531 and ASA.

ID TAG: POLYCARBONATE

HOSES: Good Year® Hoses Rate at 750 PSI WP



CERTIFIED BY CHARLES P. SUTTON - PRESIDENT

GLOBAL VISION INC.

8800 JEFFERSON HWY  
 OSSEO, MINNESOTA 55369  
 763 - 391 - 0990

FIRE PUMP ASSEMBLY  
 10" BUTTWELD

R-1	10/04/08	ADDED NOTES/ MET DIMS	DATE:	09/13/08
			SCALE:	NTS
			DWG #	GVIFP-10-BW
			APPROVED	CPS