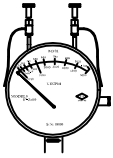


METER DATA



CONSTRUCTION: ALUMINUM BODY ASTM B211-03
 OPERATION: DIAPHRAGM (BUNA CONVOLUTED)
 ACCURACY: + 2% FULL SCALE
 TEMPERATURE: 180°F / 80°C
 PRESSURE: 500 PSIG - 3450 KPA
 APPROX. WEIGHT: 3.75 LBS (1.7 KGS)

4" DIAL STANDARD - 6" DIAL AVAILABLE

CONSTRUCTION & SPECIFICATIONS

MATERIALS: MACHINED 1026 CARBON STEEL
 ASTM A-106 - B/C HRS
 or
 ASTM A-216 Gr. WCB CAST STEEL

VALVES: 1/4" BRASS BALL
 Rated @ 600 WOG
 Body: ASTM-B584
 Tail Piece: ASTM B16 C36600
 Ball: ASTM B16 C36600
 (HARD CHROME PLATED)

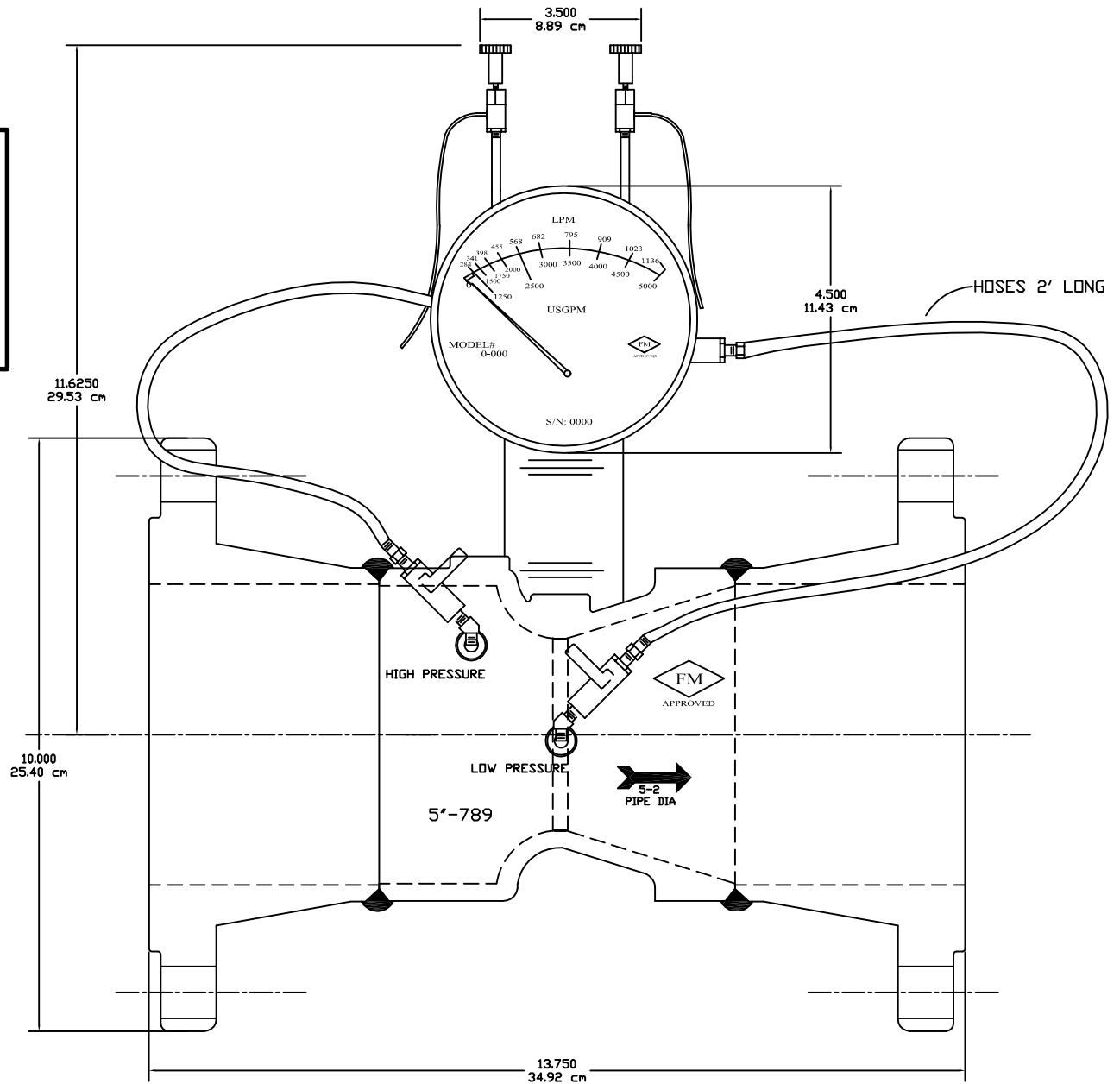
BRASS FITTING: ASTM B16 C36600
 Meets functional requirements of the
 SAE J530, SAE J531 and ASA.

FLANGE: 300# ANSI B 16.5

WELDING: ASME B31.1 INTERPRETATION No. 32
 PRESSURE VESSEL IX

ID TAG: POLYCARBONATE

HOSES: Good Year® Hoses Rate at 750 PSI WP



CERTIFIED BY CHARLES P. SUTTON - PRESIDENT

GLOBAL VISION INC.

8800 JEFFERSON HWY
 OSSEO, MINNESOTA 55369
 763 - 391 - 0990

FIRE PUMP ASSEMBLY
 5" FLANGED 300#

		DATE:	10/04/08
		SCALE:	NTS
		DWG #	GVIFP5-300-F
		APPROVED BY:	CPS